

Part Number:
KXA00462

Models:
Guerrilla 450

WARNING: Royal Enfield genuine accessories are designed to fit only the specific Royal Enfield motorcycle(s) that are specified above. They should not be fitted to any other type of motorcycle. Pay particular attention to the warnings and cautions contained in this instruction, failure to do so may result in an incorrect installation of the accessory which could result in an unsafe riding condition and possible accident. If in any doubt always seek help from your authorised Royal Enfield dealer.

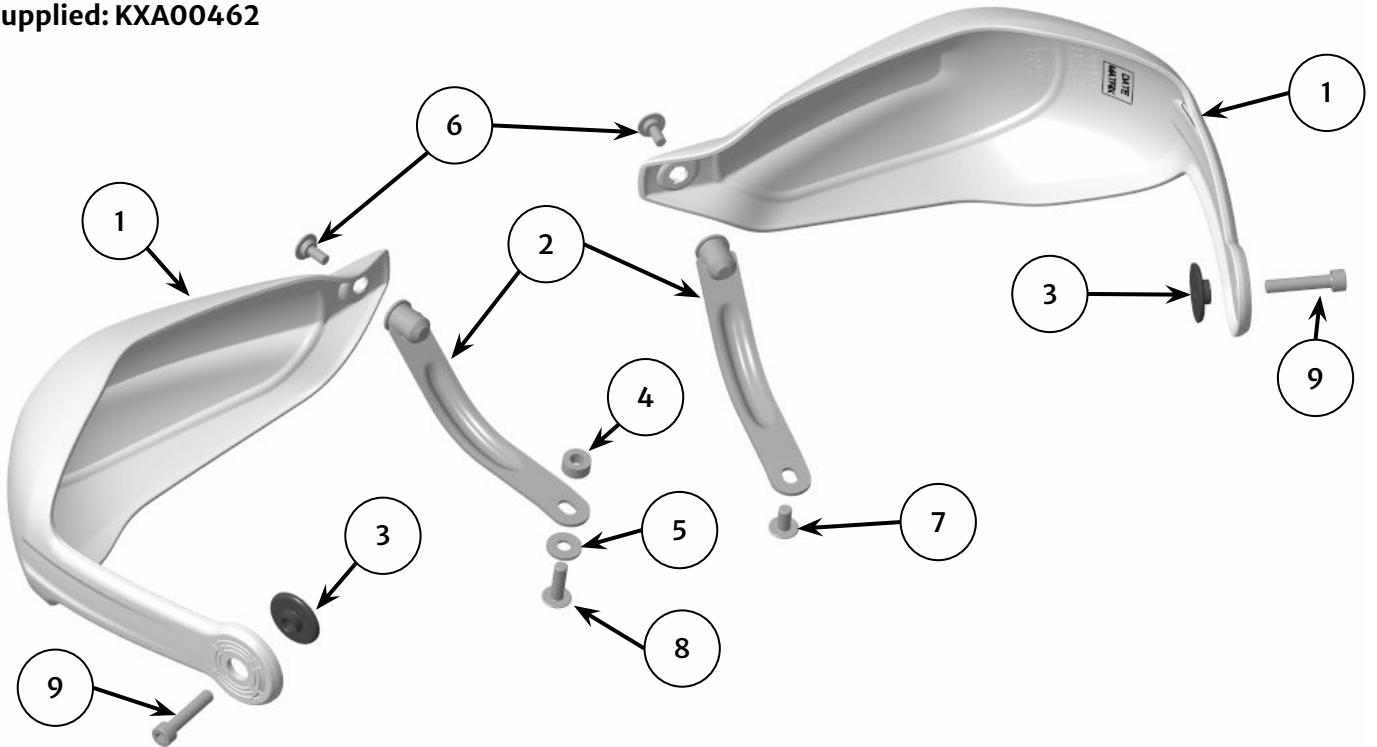
WARNING: Before starting any accessory kit installation ensure the motorcycle is supported in a stable condition. Failure to support the motorcycle correctly could lead to motorcycle damage or personal injury.

WARNING: All fixings must be tightened to the torque values specified in this instruction. Failure to tighten fixings to the correct torque could result in an unsafe riding condition and possible accident

CAUTION: Care should be taken when fitting any accessory kit. Incorrect handling of kit components or the use of incorrect tools could lead to component or motorcycle damage.

NOTE: The content of this instruction is subject to change at any time without notice or liability. Royal Enfield reserves the right to revise the information presented at any time.

Parts Supplied: KXA00462



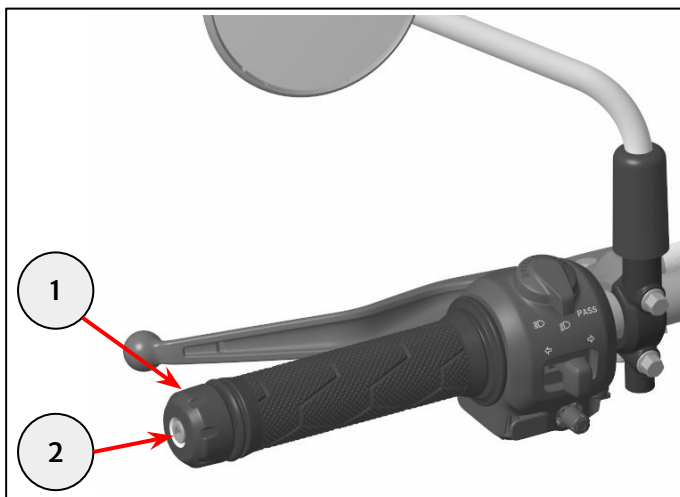
Item	Description	Qty
1	Handguard Shroud (non handed)	2
2	Bracket (non handed)	2
3	Bar end spacer	2
4	Spacer, M6	1
5	Washer, M6	1
6	Fixing, M5 x 12.5mm	2
7	Fixing, M6 x 12mm	1
8	Fixing, M6 x 20mm	1
9	Fixing, M6 x 30mm	2

1 Remove the left hand handlebar bar end weight (1) and retain for reuse.

Retain the fixing (2) for reuse if the motorcycle is to be returned to its original condition.



5mm hexagonal bit and ratchet

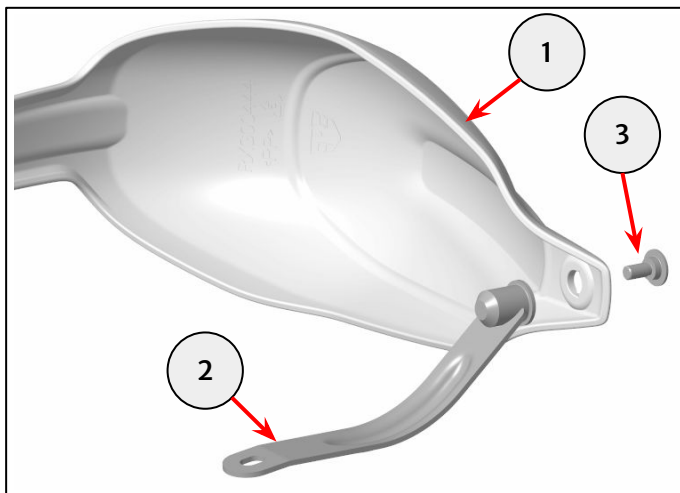


2 Assemble a handguard shroud (1) and a bracket (2) with a M5 x 12.5mm fixing (3) from the kit, as shown.

Do not fully tighten the fixing at this stage.



4mm hexagonal bit and ratchet

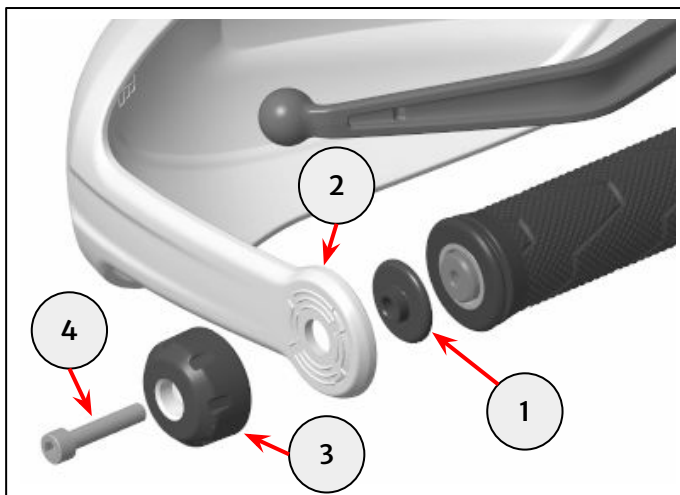


3 Fit a bar end spacer (1), left hand handguard (2) and reused bar end weight (3) to the handlebar end, as shown. Secure with a M6 x 30mm fixing (4) from the kit.

Do not fully tighten the fixing at this stage.



5mm hexagonal bit and ratchet

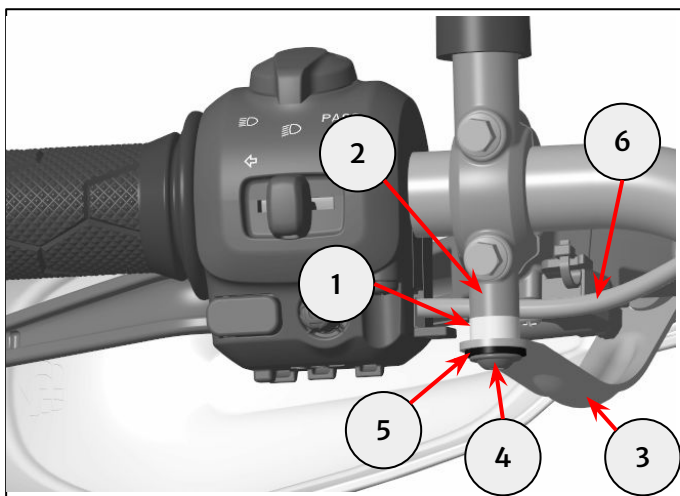


4 Locate the M6 spacer (1) between the clutch clamp mount boss (2) and bracket (3). Fit the M6 x 20mm fixing (4) with the washer (5) under the fixing head. Align the bracket (3) to locate the fixing in the rearward position of the bracket slot. Tighten to 5Nm.

Note: Take extra care to ensure the cable (6) is routed in front of the mount boss (2) and above the bracket (3), as shown.



4mm hexagonal bit and torque wrench

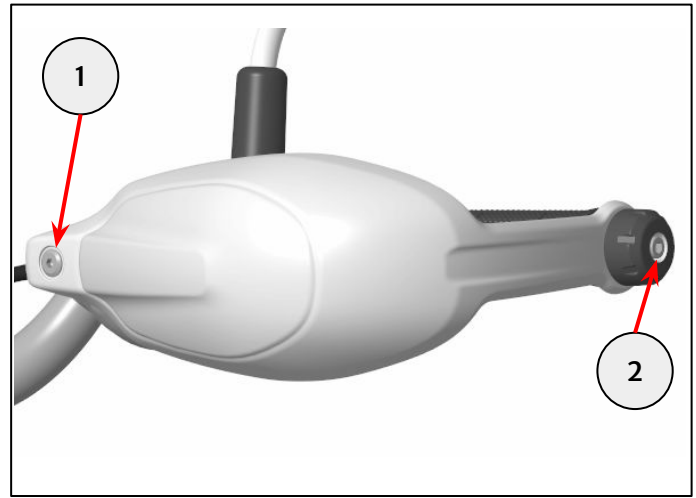


5 Tighten the two remaining fixings as below:

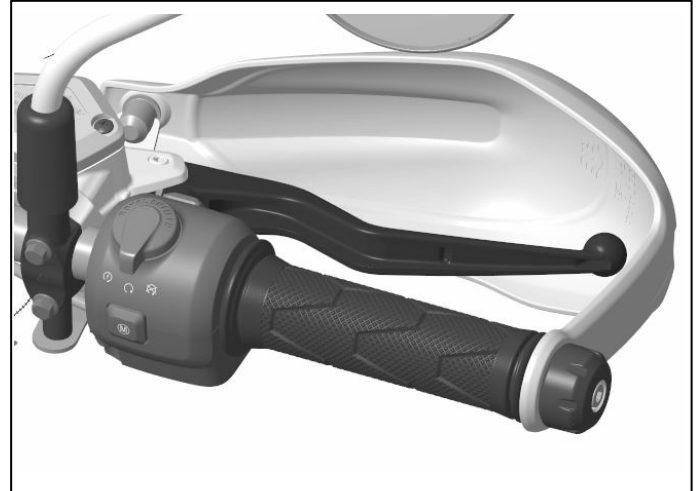
- M5 x 12.5mm fixing (1) to **5Nm**
- M6 x 30mm fixing (2) to **10Nm**



4mm and 5mm hexagonal bit and torque wrench



6 Repeat steps 1-3 for the right hand side.

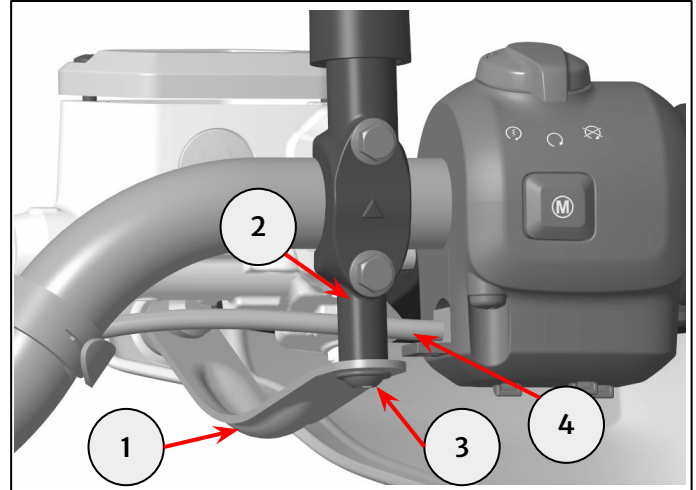


7 Locate the bracket (1) on the front master cylinder clamp mount boss (2). Fit the M6 x 12mm fixing (3). Align the bracket (3) to locate the fixing in the forward position of the bracket slot. Tighten to **5Nm**.

Note: Take extra care to ensure the cable (4) is routed in front of the mount boss (2) and above the bracket (1), as shown.



4mm hexagonal bit and torque wrench



8 Tighten the two remaining fixings:

- M5 x 12.5mm fixing (1) to **5Nm**
- M6 x 30mm fixing (2) to **10Nm**



4mm and 5mm hexagonal bit and torque wrench

