



**Part Number:**  
KXA00651 (Silver)  
KXA00652 (Black)

**Models:**  
BS VI Meteor, Classic & Bullet  
With VIN starting ME3J3A5FAL2  
**Excluding Single Channel ABS/Drum Brake Variants**

 **WARNING:** Royal Enfield genuine accessories are designed to fit only the specific Royal Enfield motorcycle(s) that are specified by the model name and VIN number above. They should not be fitted to any other type of motorcycle. Pay particular attention to the warnings and cautions contained in this instruction, failure to do so may result in an incorrect installation of the accessory which could result in an unsafe riding condition and possible accident. If in any doubt always seek help from your authorised Royal Enfield dealer.

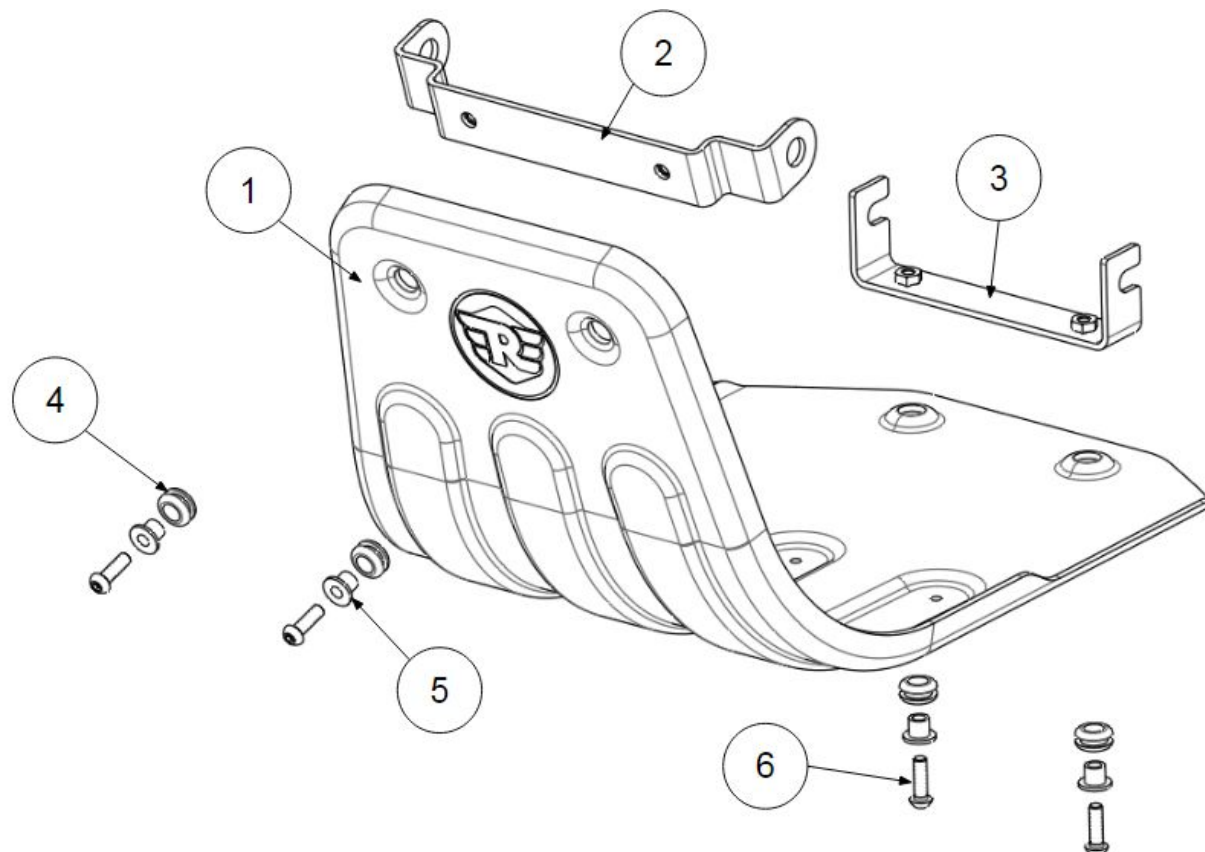
 **WARNING:** Before starting any accessory kit installation ensure the motorcycle is supported in a stable condition. Failure to support the motorcycle correctly could lead to motorcycle damage or personal injury.

 **WARNING:** All fixings must be tightened to the torque values specified in this instruction. Failure to tighten fixings to the correct torque could result in an unsafe riding condition and possible accident

 **CAUTION:** Care should be taken when fitting any accessory kit. Incorrect handling of kit components or the use of incorrect tools could lead to component or motorcycle damage.

**NOTE:** The content of this instruction is subject to change at any time without notice or liability. Royal Enfield reserves the right to revise the information presented at any time.

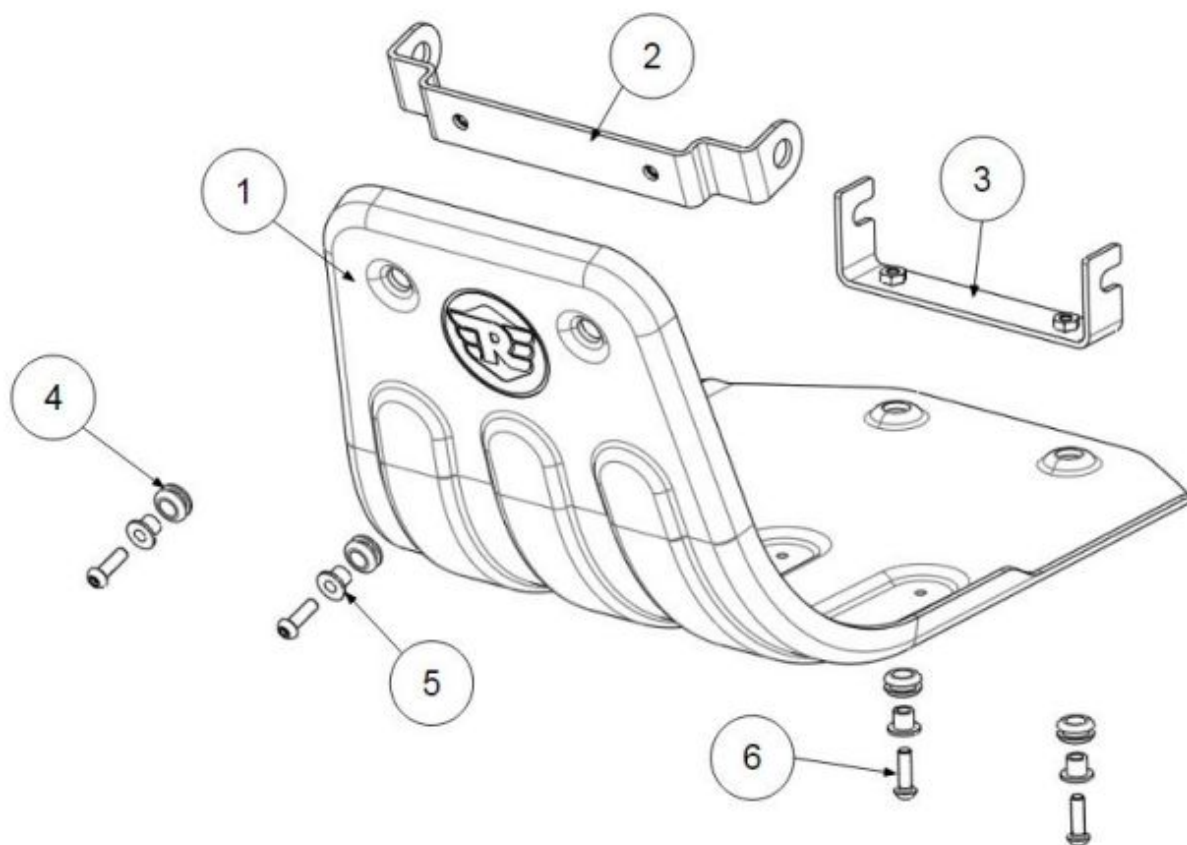
KXA00651



## KXA00651 - Parts list

Item	Description	Qty
1	Sump Guard	1
2	Front Mounting Bracket	1
3	Rear Mounting Bracket	1
4	Rubber Grommet	4
5	Top Hat Spacer	4
6	Bolt, M6 x 20	4

## KXA00652

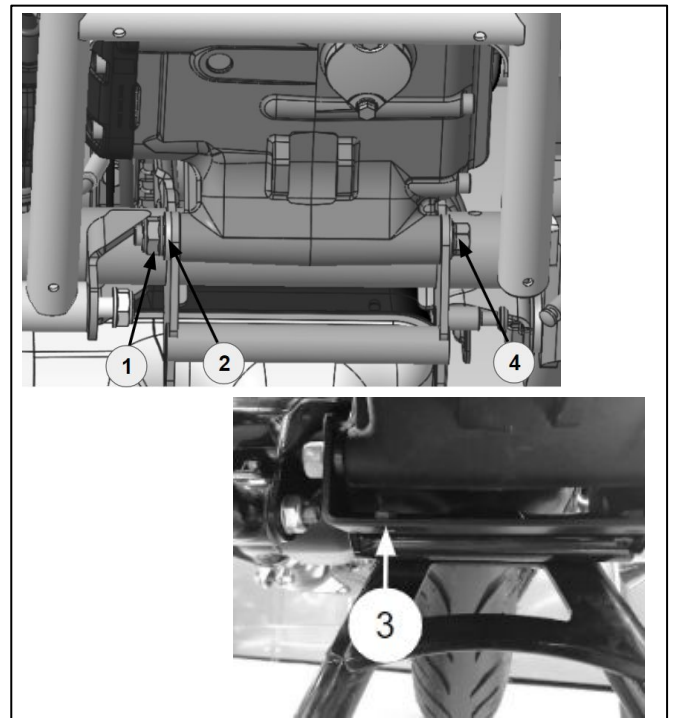
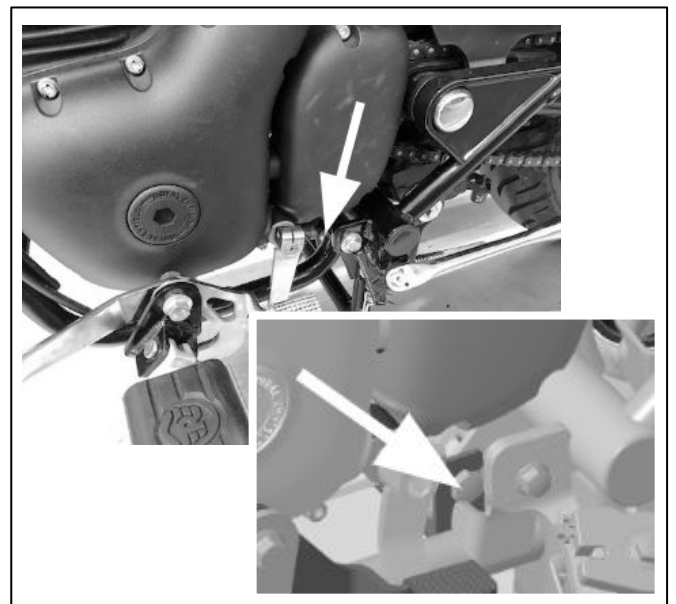
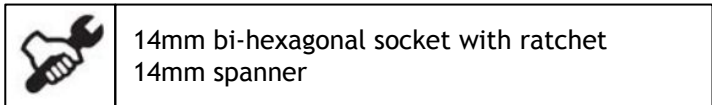


## KXA00652 - Parts list


Item	Description	Qty
1	Sump Guard	1
2	Front Mounting Bracket	1
3	Rear Mounting Bracket	1
4	Rubber Grommet	4
5	Top Hat Spacer	4
6	Bolt, M6 x 20	4

**1** Remove the bottom engine mount bolt (4), washer (2) and U nut (1) and hang the bottom bracket (3) onto the bolt. Omit the washer (2) and locate the U nut (1) onto the end of the bolt.

Note: Retain the washer for future use.



**2** Hold the rear mount bracket (3) parallel to the ground. Use a spanner to hold the bolt on the left hand side of the vehicle, and tighten the nut to **55Nm**.


	<p>14mm crows-foot spanner attachment 14mm spanner Torque wrench</p>
--	--

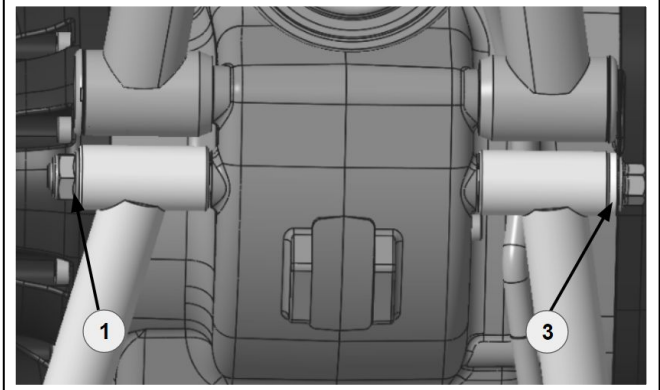


**3** Remove the front engine mount bolt (arrowed), Washer (3) and U nut (1). Assemble the front mount bracket (2) as shown, leaving the bolt loose at this stage.

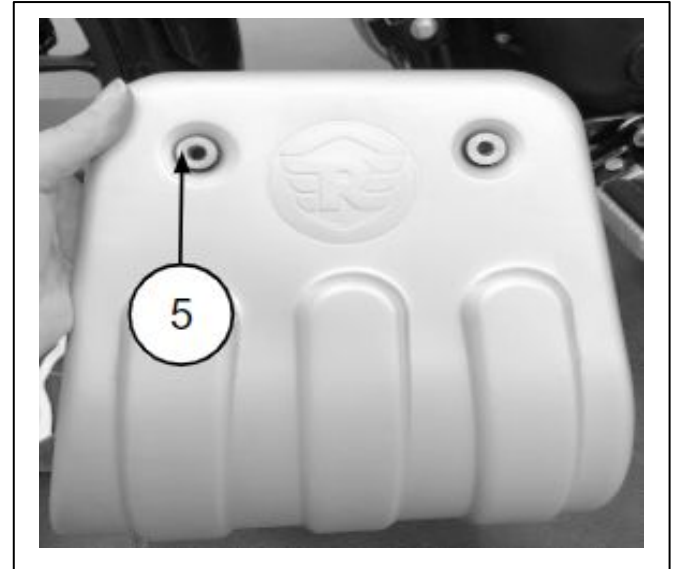
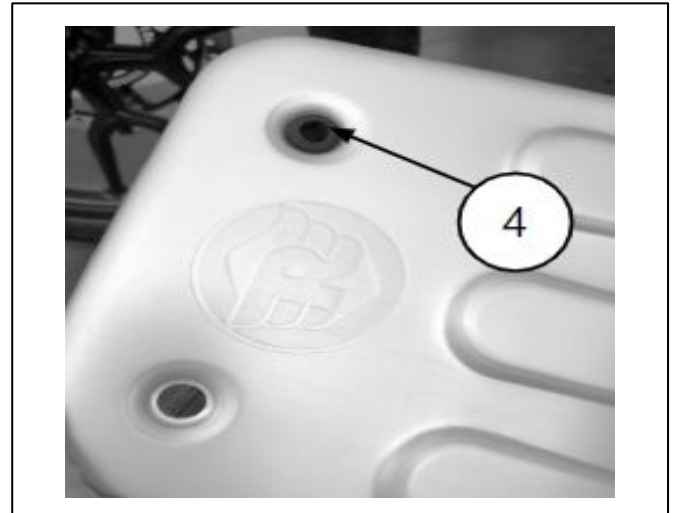
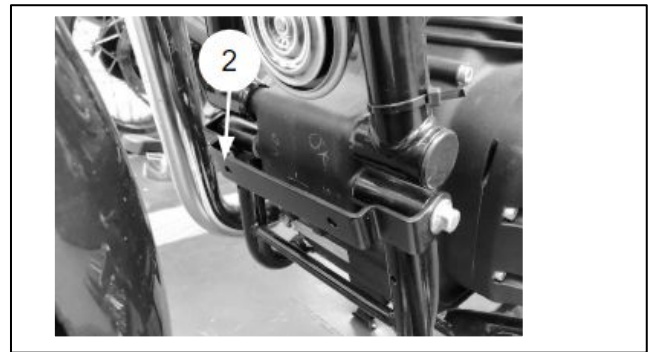
Note: Omit the Washer (3) and locate the U nut (1) at the end of the bolt. Retain the washer for future use.

Note: If the sump guard is to be fitted with engine guards, follow instructions KXL00074 to step 5 but do not tighten the front bolt at this stage.


	<p>13mm bi-hexagonal socket and ratchet 17mm spanner</p>
--	--

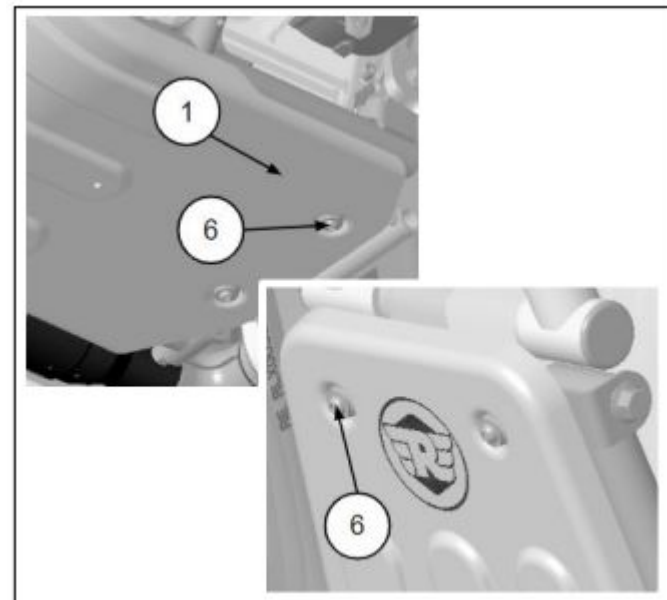


**4** Push 4 Rubber grommets (4) through the sump guard mount holes, ensuring the rubber is sat correctly on both sides. Push 4 top hat spacers (5) into the rubber grommets so that the flange is on the front face of the sump guard.




**5** Hold the sump guard (1) up to the brackets and loosely assemble 2 M6 bolts (6) to the rear mount bracket. Hold the front of the sump guard (1) up to the front mount bracket (2) and loosely assemble 2 M6 bolts (6). Tighten all 4 M6 bolts to **8Nm**.

	4mm hexagonal socket and torque wrench
--	--



**6** Tighten the front engine mount bolt to **55Nm**.

Note: torque should be applied to the bolt head, rather than the nut.

	13mm bi-hexagonal socket and torque wrench 17mm spanner
--	--

**7** Check operation of all controls, including gear and brake pedals for clearance to the sump guard before operating the vehicle.



**WARNING:** After fitting any genuine Royal Enfield accessory always ride the motorcycle with caution and allow time to become familiar with any change in the motorcycle handling characteristics. Failure to become familiar with any change in the motorcycle handling characteristics may cause the motorcycle to become unstable and result in an accident.